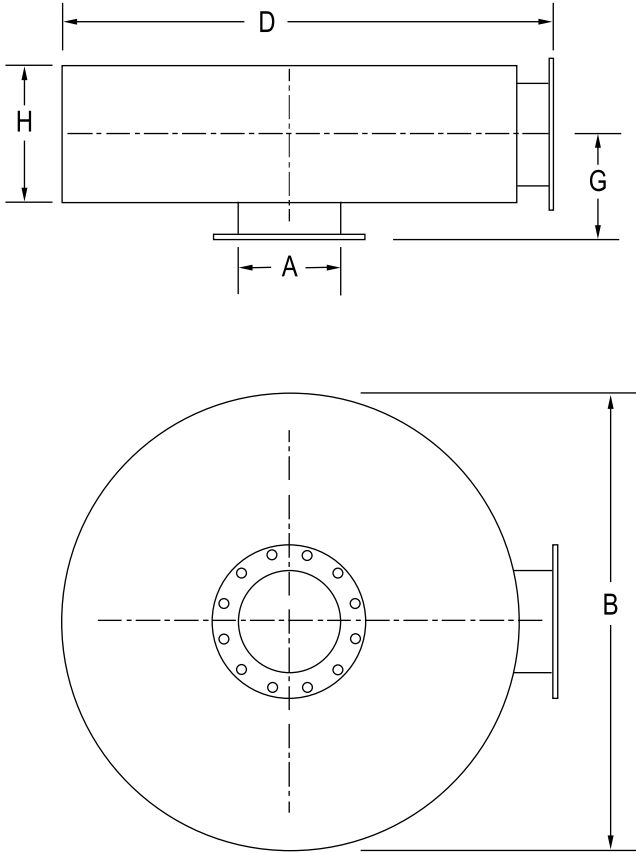


### Hospital Grade DH2 Series



#### Applications

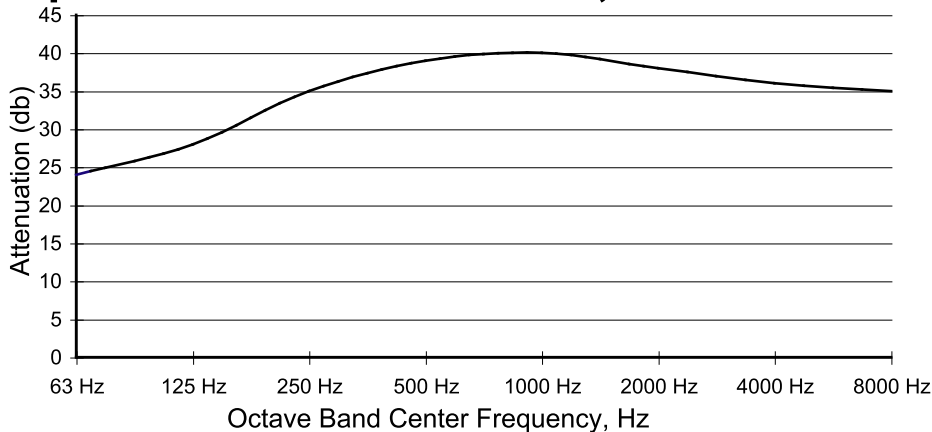
- The DH series is a low profile silencer used in critical areas such as hospital environments
- A wide range of brackets are available to meet your installation needs
- Average noise level reductions: 33-44 dBA

#### Construction

- A combination of absorptive and reactive chambers
- Carbon steel construction is standard however other materials such as stainless steel and aluminized steel are available
- Painted with high temperature black paint
- Dual inlets as well as other inlet and outlet configurations are available
- Standard connections are ANSI flanges
- Fiberglass packed shell:
  - Reduces airborne and shell radiated noise
  - Reduces outer surface temperatures
- Smaller and larger sizes are available upon request

Model	A	B	D	G	H	WT
DH2-04-0001	4	30	34	8	9	160
DH2-05-0001	5	36	40	8.5	10	240
DH2-06-0001	6	36	40	9	11	300
DH2-08-0001	8	48	52	10.25	13	500
DH2-10-0001	10	60	64	11.25	15	780
DH2-12-0001	12	72	76	12.25	17	1000
DH2-14-0001	14	72	76	15	22	1200
DH2-16-0001	16	72	76	17	26	1400
DH2-18-0001	18	84	88	18	28	1800

#### Representative Attenuation Curve, DH2 Series



Customize your exhaust system to meet your application needs!

We will work with you to design the silencer and exhaust components that will save product cost and installation time.

BMED-101 (10/08)

BelMar Industries

Ph: 952-486-8588

Fax: 952-486-8289

www.belmar-ind.com