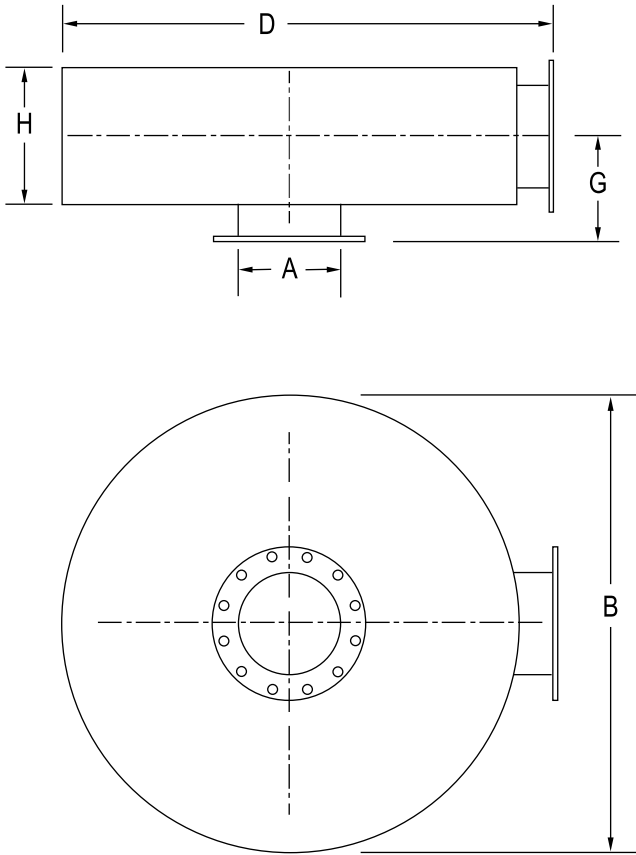


Residential Grade DR2 Series



Applications

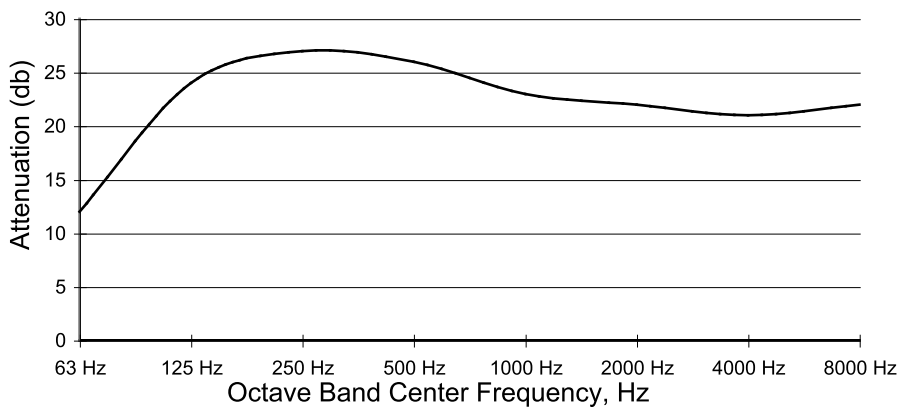
- The DR2 series is a low profile silencer intended for areas where moderate levels of silencing are needed
- A wide range of brackets are available to meet your installation needs
- Average noise level reductions: 18-25 dBA

Construction

- A combination of absorptive and reactive chambers
- Carbon steel construction is standard however other materials such as stainless steel and aluminized steel are available
- Painted with high temperature black paint
- Dual inlets as well as other inlet and outlet configurations are available
- Standard connections are ANSI flanges
- Fiberglass packed shell:
 - Reduces airborne and shell radiated noise
 - Reduces outer surface temperatures
- Smaller and larger sizes are available upon request

Model	A	B	D	G	H	WT
DR2-04-0001	4	20	24	8	9	75
DR2-05-0001	5	24	28	8.5	10	90
DR2-06-0001	6	24	28	9	11	110
DR2-08-0001	8	30	34	10.25	13	180
DR2-10-0001	10	36	40	11.25	15	280
DR2-12-0001	12	48	52	12.25	17	430
DR2-14-0001	14	48	52	14	20	560
DR2-16-0001	16	54	58	15	22	650
DR2-18-0001	18	60	64	16	24	810

Representative Attenuation Curve, DR2 Series



Customize your exhaust system to meet your application needs!

We will work with you to design the silencer and exhaust components that will save product cost and installation time.

BMED-100 (10/08)

BelMar Industries

Ph: 952-486-8588

Fax: 952-486-8289

www.belmar-ind.com